

# Lontrel™ XC

## HERBICIDE

Lontrel™ XC herbicide improves the control of thistles and other hard to control broadleaf weeds in field corn and other field crops.

### WHY USE LONTREL XC HERBICIDE?

- **Gets to the root of the problem:** Lontrel XC herbicide is systemic in perennial weeds, translocating throughout the above and below ground parts of the plant. This helps to provide more effective and lasting control of perennials such as Canada thistle and perennial sow-thistle.
- **Unique performance on hard to control weeds:** Lontrel XC helps you to clean up your fields targeting some of the tougher weeds like thistles and vetch.
- **Easy to Use:** A higher concentration XC formulation helps you cover more acres with every jug. Lontrel XC is easy to tank-mix and has a wide window of application up to the 8 leaf stage of field corn.

#### WEEDS CONTROLLED<sup>1</sup>

- Alsike clover
- Canada thistle
- Common groundsel
- Perennial sow thistle (top growth)
- Ragweed
- Red clover
- Scentless chamomile
- Vetch
- Volunteer alfalfa
- White clover
- Wild buckwheat

#### WEEDS SUPPRESSED

- Ox-eye daisy
- Sheep sorrel

<sup>1</sup>The performance of Lontrel XC is rate dependent.

\*Refer to label use rates in individual crops.

### LONTREL XC APPLICATION GUIDELINES

#### RATES AND ACRES TREATED

##### Rate:

- 69-202 ml/ac\*
- Water volume
- 10-20 US Gal/ac

#### PACKAGING

##### Case:

- 4 x 2.67 L jugs

#### WHEN TO APPLY

- **Canola (Ontario only):** 2 to 6-leaf
- **Field corn:** spike to 8-leaf (V6)
- **Rutabagas:** apply when common ragweed is 5-10cm
- **Sugar beets:** cotyledon to 8-leaf
- **Wheat, barley (spring):** 3-leaf to flag leaf
- **Wheat (winter):** 3 tiller stage to just before flag leaf

- **Weed stage:** Apply to Canada thistle, perennial sow thistle and scentless chamomile in the rosette to pre-bud stage

#### RAINFAST

- 4 hours

## LONTREL™ XC APPLICATION INFORMATION

### Glyphosate Tolerant Field Corn (grain, silage or grazing):

Apply Lontrel XC alone or in a tank mix with glyphosate. Apply when field corn is at the spike to 8-leaf stage of growth.

- 69 mL/acre: Tank mix with glyphosate for enhanced control of Canada thistle<sup>1</sup>, dandelions<sup>2</sup>, perennial sow-thistle<sup>1</sup> and wild buckwheat.
- 101 mL/acre: Canada thistle (top growth), vetch and alsike clover.

Do not apply to sweet corn, seed corn or popcorn.

<sup>1</sup> Season long top-growth, <sup>2</sup> <15 cm diameter (season-long top growth), >15 cm diameter (suppression)

### Cereals (winter wheat, spring wheat, durum wheat, barley):

69-101 mL/acre: Tank mix with 2,4-D Ester or Amine, MCPA Ester or Amine for enhanced control of Canada thistle as well as weeds listed on the tank mix label.

### Canola (Ontario only):

101 mL/acre: Apply at the 2-6 leaf stage of canola for top growth control of Canada thistle.

### Sugar Beets:

138-202 mL/acre: For control of Canada thistle and other labelled broadleaf weeds, apply either broadcast or as a band over the row.

### Rutabaga:

138 mL/acre: For control of common ragweed, apply Lontrel XC when plants are 5 to 10 cm tall.

## CROP ROTATION:

Eastern Canada: Fields previously treated with Lontrel XC herbicide, up to 101 ml/ac, can be seeded the following year to wheat, oats, barley, rye (not underseeded with legumes, clover or alfalfa), forage grasses, flax, canola, mustard, soybeans<sup>3</sup>, field peas<sup>3</sup> or sugar beets<sup>3</sup>.

<sup>3</sup> Refer to label for more detailed recommendations.

## PRE-HARVEST INTERVAL (PHI):

Rutabaga: 83 days

Sugar beets: 90 days

Durum wheat: 60 days

Field corn: Do not allow livestock to graze treated areas or harvest treated field corn for silage as feed within 40 days after last treatment.



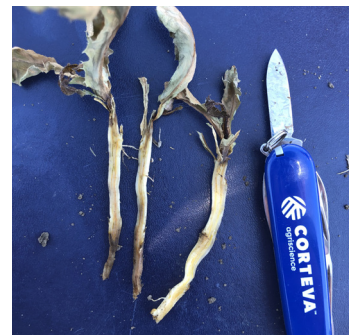
Glyphosate only  
9 DAA



Lontrel XC + glyphosate  
9 DAA



Lontrel XC + glyphosate  
24 DAA



Lontrel XC + glyphosate  
24 DAA

DAA = Days after application