



Optimum[®] GLY
HERBICIDE TOLERANCE

Canadian Technical Bulletin





Introduction

Optimum® GLY herbicide tolerance trait is a new herbicide-tolerant technology developed by Corteva Agriscience. Glyphosate is the most widely used herbicide active ingredient in agriculture today as it provides effective, reliable, broad-spectrum and inexpensive weed control. Why develop a new glyphosate-tolerant technology? Farmers value choice and innovation that improves upon existing technology to enable mitigation of current and future weed management challenges. Corteva Agriscience's ownership of this proprietary glyphosate tolerance technology increases options for farmers to choose their supply of traits and germplasm that meets their agronomic needs.

The Optimum® GLY herbicide tolerant trait provides farmers with three primary benefits (highlighted to the right).

This technical bulletin is for educational purposes only and has been designed to provide the details needed to explain why and how Optimum GLY fits as a foundational component to our customers' integrated weed management system.

Optimum® GLY herbicide tolerant trait technology is designed to deliver top yield potential and agronomic trait performance through:

IMPROVED CROP SAFETY

Top yield potential due to unique differences compared to other glyphosate trait-tolerant systems

ENHANCED BROAD-SPECTRUM WEED CONTROL

Improved spectrum and control of hard-to-control annual and perennial weeds

GREATER APPLICATION FLEXIBILITY

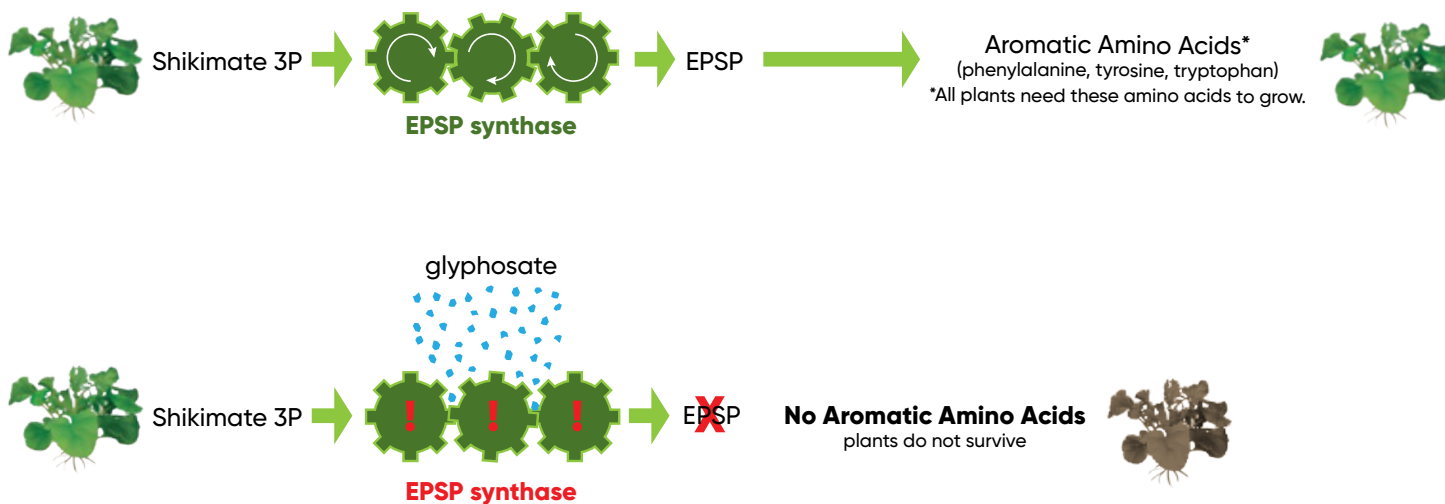
Enhanced crop safety and a wider application window from cotyledon to first flower, with a single application of 2 REL/ac/season or 2 applications of 1 REL/ac/season

What is the Optimum® GLY herbicide tolerance trait?

The Optimum® GLY herbicide tolerance trait enables canola hybrids to deliver on their genetic yield potential and agronomic traits, and allows higher glyphosate application rates and the flexibility to make applications into the reproductive stage of development.

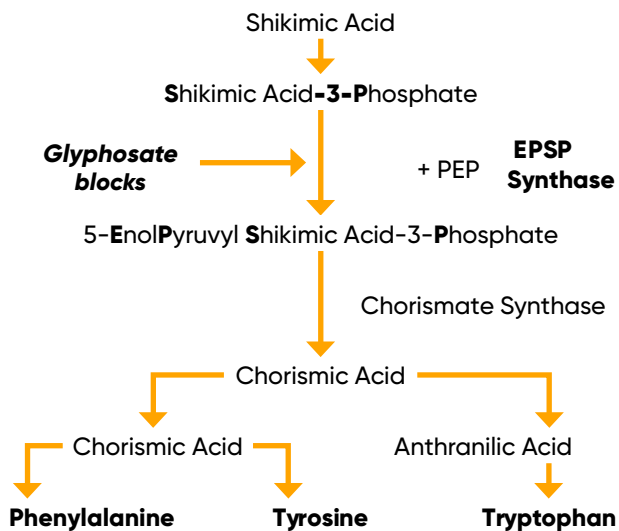
Glyphosate controls plants by inhibiting the shikimic acid pathway, which is critical to plant survival as it produces aromatic amino acids needed to sustain plant growth (Figure 1). Figure 1 provides a simplified version of how glyphosate affects plant growth.

Figure 1. Glyphosate Mode of Action



More specifically, glyphosate shuts down the EPSPS (5-enolpyruvylshikimate-3-phosphate synthase) enzyme preventing the construction of three critical aromatic amino acids: phenylalanine, tyrosine, and tryptophan. The EPSPS enzyme is critical to catalyzing the next to last step in the biosynthetic pathway for these aromatic amino acids (Figure 2). Glyphosate inhibits EPSPS from creating EPSP (5-EnolPyruvicshikimic Acid-3-Phosphate), which is the precursor for creating chorismic acid needed as the base for these three amino acids: phenylalanine, tyrosine, and tryptophan. Amino acids are the building blocks of proteins required for, in this case, plant growth.

Figure 2. Glyphosate targets the plant EPSPS enzyme involved in aromatic amino acid biosynthesis.

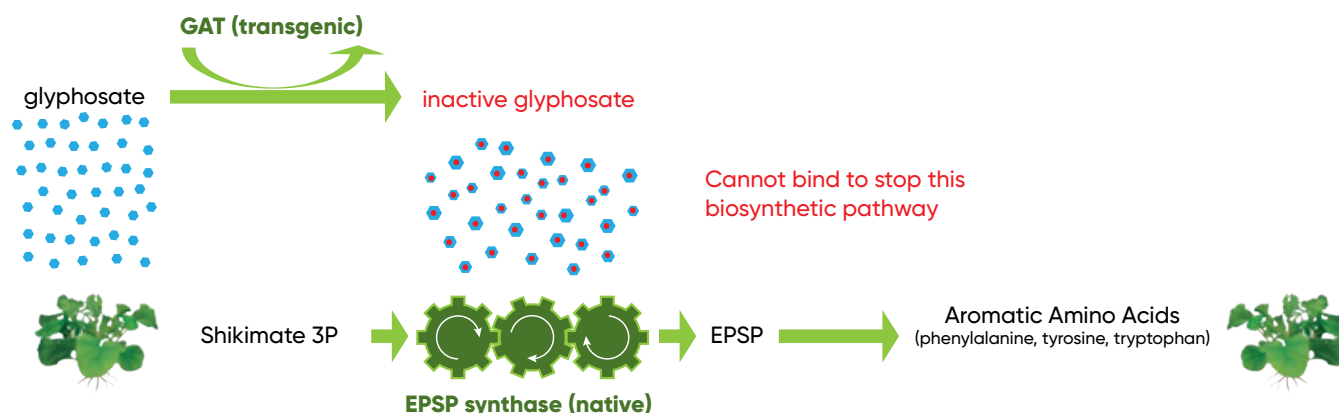




How is Optimum[®] GLY herbicide tolerance trait different from other herbicide-tolerant glyphosate technologies?

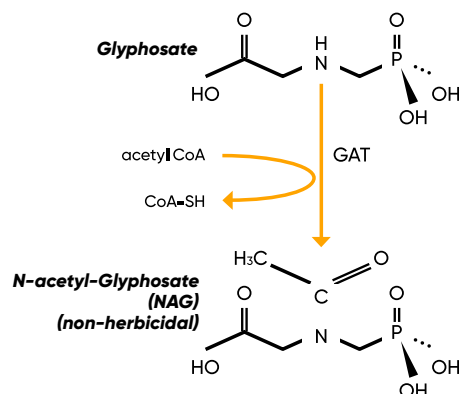
Simply put, Optimum[®] GLY expresses glyphosate acetyltransferase (GAT), which is an enzyme that metabolizes glyphosate upon its entry into the canola plant converting glyphosate to a herbicidally-inactive form. This conversion prevents the “herbicidally-active” molecule from binding to EPSPS and stopping the critically important shikimic acid pathway required for canola growth (Figure 3).

Figure 3. Optimum GLY deactivates glyphosate to survive.



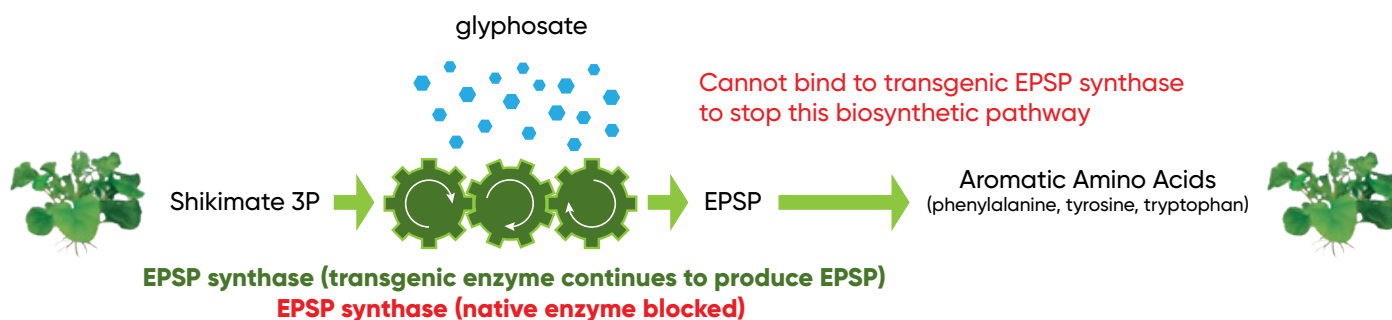
Here is how it works. GAT detoxifies glyphosate through an acetylation process (Figure 4) creating N-acetyl glyphosate, which is herbicidally-inactive. The GAT4621 protein expressed in Optimum GLY originates from a soil bacterium, *Bacillus licheniformis*. DNA shuffling is a process that recombines genetic diversity from parental genes to create libraries of gene variants that are screened to identify those with improved properties. Through DNA shuffling of the original gene, a variant was identified with improved ability to acetylate glyphosate (introduces an acetyl functional group on to the glyphosate molecule). The GAT4621 gene was used to create event DP-73496-4 introduced into canola using biolistic transformation technology. This event (DP-73496-4) produced a single, intact gene insertion with no extraneous DNA. This gene contains a constitutive promoter which means it is expressed in all parts of the plant. The observance of robust tolerance to glyphosate and favorable agronomic performance were the precursors to this gene being introgressed into high yield potential, elite canola hybrids for commercial release.

Figure 4. Glyphosate acetyl transferase reaction



Other glyphosate technologies including Roundup Ready® canola and TruFlex™ technology work by utilizing a gene that creates an altered EPSPS enzyme in the plant, one that is not inhibited by glyphosate (Figure 5). When glyphosate is sprayed, it disables the native EPSPS synthase, but is not able to disable the transgenic gene in Roundup Ready® canola and TruFlex™ technology, allowing the shikimate pathway to proceed. TruFlex™ technology is different from Roundup Ready® canola as it adds an enhancer sequence in the promoter region to heighten transgenic enzyme expression in male (pollen) reproductive tissue.

Figure 5. Roundup Ready® canola and TruFlex™ technology Modes of Action



Why choose the Optimum® GLY herbicide tolerance trait as part of my integrated weed management system?

All benefits previously observed with glyphosate-tolerant systems will continue, and be improved upon, with the Optimum® GLY weed management system. Those benefits include improved adoption of conservation tillage and improved flexibility in crop management like 'time of planting' and 'timing of weed control' operations. Beyond the immediate benefits provided to a grower, this trait will increase opportunities for canola germplasm developers to further develop and maximize the potential of Optimum GLY, bringing high yielding germplasm to market for our customers' farms.

Due to Optimum GLY expressing the GAT gene in all growing plant tissues (leaves, stems, flowers, roots), the plant is protected and labelled for spray application from cotyledon to first flower. **This allows for spray rate and timing decision flexibility while improving control on a wider spectrum of weeds.** Hard-to-control weeds like cleavers, dandelion, foxtail barley, perennial sow thistle, Canada thistle and wild buckwheat that can now be managed effectively.

Improved crop safety of Optimum GLY compared to existing Roundup Ready® canola is evidenced in comparing approved label application rates, the number of allowable sprays during the growing season, and the flexibility of spraying on later stages of canola crop development. In 10 research locations over 2 years, crop injury evaluations on Optimum GLY demonstrated <1% injury at all application timings with 2 REL/ac. Greater than 80% of locations had 0% injury. At these same locations, Roundup Ready® canola resulted in an average >50% injury with higher rates and later application timings (Figure 6). Past research has shown a 4.3 bu/ac yield loss when applications are made too late (past the six-leaf stage on Roundup Ready® canola). Above label rates on Roundup Ready® canola also contribute to yield loss through reduced flowering. Late application or higher than recommended rates can cause yield loss on Roundup Ready® canola.¹ Optimum GLY allows growers more flexibility to spray effective rates and timings to help manage environmental conditions and/or late flushing weeds.

Optimum® GLY Key Features

- IMPROVED CROP SAFETY
- ENHANCED BROAD-SPECTRUM WEED CONTROL
- GREATER APPLICATION FLEXIBILITY

¹ Always read and follow label directions. Testing conducted on Roundup Ready® canola was for research purposes only and were not labeled application rates or timings.

Figure 6. Comparing Roundup Ready® canola to Optimum® GLY herbicide tolerance trait with 2L (REL) applied at 4 leaf and 1st flower stage of development.



Roundup Ready® canola after 2L (REL) applied at 4 leaf and first flower.

Optimum® GLY after 2L (REL) applied at 4 leaf and first flower.

Table 1. Comparison of glyphosate labeled timing and rates on the three glyphosate-tolerant technologies. REL = Roundup Equivalent Liter (1 REL/ac = 360 g ai/ha)

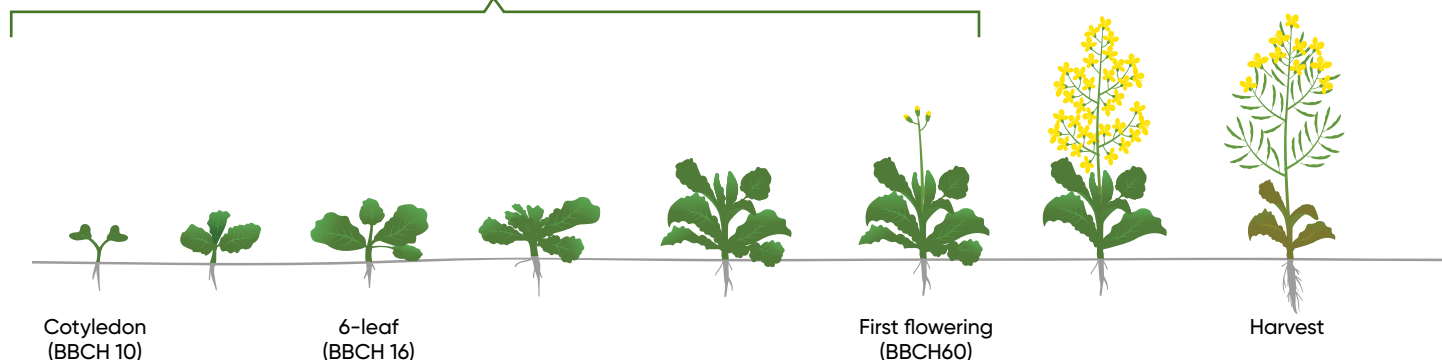
Stage	Roundup Ready® canola	TruFlex™ technology	Optimum® GLY herbicide tolerance trait
Emergence – 6 leaf	0.5 REL/ac + 0.5 REL/ac OR Max 0.75 REL/ac single application	Up to 2.0 REL/ac for a single application	Up to 2.0 REL/ac for a single application
Emergence – First flower	N/A	1.0 REL/ac + 1.0 REL/ac	1.0 REL/ac + 1.0 REL/ac

Figure 7. Approved label application rate and timing comparison.

Roundup Ready® canola spray window – Emergence to 6 leaf: 0.5 REL/ac + 0.5 REL/ac OR Max 0.75 REL/ac single app

Optimum® GLY and TruFlex™ technology spray window – Emergence to 6 leaf: Up to 2.0 REL/ac

Optimum GLY and TruFlex technology spray window – Emergence to first flower: 1.0 REL/ac + 1.0 REL/ac



Stewardship Requirements

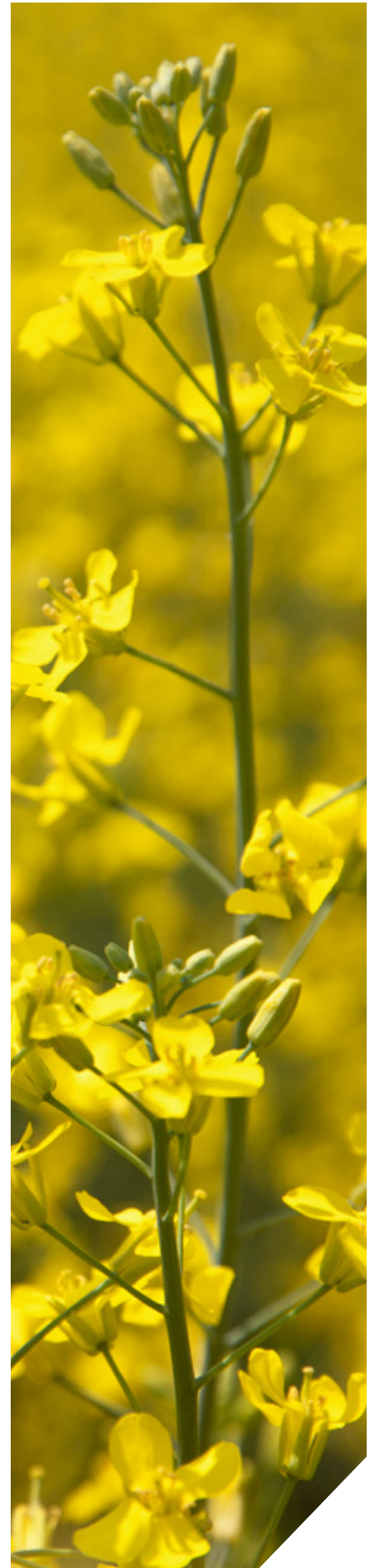
There are many glyphosate products on the market today. Corteva Agriscience supports the use of any glyphosate product labelled for use with Optimum® GLY herbicide tolerance trait. Growers should also follow recommended crop and herbicide rotations to avoid or delay the development of herbicide resistant weed populations.

Integrated Weed Management and Best Practices

A farmer's weed management system choice is only one of many considerations when determining what seed and crop protection products to purchase. For each and every field, farmers need to prioritize many canola seed decision factors that typically include yield potential, disease management, harvest ease, targeted return on investment, and weed management. Optimum GLY hybrids provide a tool that will fulfill many of these factors, while also allowing farmers to diversify and customize their weed management solutions to satisfy their short- and long-term goals. As described below, we support an integrated approach to maintaining clean, weed-free fields.

An Integrated Weed Management system is defined as the use of a range of control techniques, embracing cultural, mechanical, chemical, and biological methods in an integrated fashion without excessive reliance on any one method. (Figure 8). Consider building a multi-year integrated weed management system that incorporates the following key "best practice" principles:

- 1) Focus on implementing a diverse herbicide program including **multiple effective modes of action (MEMOA)** (as opposed to depending on the efficacy of a single product). This includes **use of both pre- and post-emergence herbicides every season.**
 - a. Give your canola the best start possible with the pre-seed weed control power of Prospect™ herbicide.
 - i) Controls a wide range of broadleaf weeds, including cleavers (overwintered and group 2 resistant biotypes), hemp-nettle, flixweed, narrow-leaved hawk's beard and many more
 - ii) More consistent and complete control than glyphosate alone
 - iii) Flexibility to spray at 5 gal/ac: low spray water volume without giving up weed control performance
 - iv) When tank mixed with glyphosate, Prospect pre-seed herbicide provides 3 effective modes of action for control of key broadleaf weeds
- 2) **Crop rotations** that promote a diverse herbicide program across years are recommended.
- 3) Utilize **herbicide mixtures** (tank mixes) with MEMOAs against key hard-to-control weed species.
- 4) Within your crop rotation, utilize **multiple herbicide tolerant traits** within and among products to enable diverse herbicide use.





What about hard-to-control weeds?

Optimum® GLY herbicide tolerance trait allows for effective management of several “hard-to-control weeds.” Robust glyphosate tolerance without crop injury enables Optimum GLY herbicide tolerance trait to provide superior weed control through flexible application rates and timing. Hard-to-control weeds include perennial sow thistle, cleavers, Canada thistle, wild buckwheat, foxtail barley, and dandelion. Example spray programs to include these hard-to-control weeds, and others, may include Lontrel™ XC tank-mixed with glyphosate. Please refer to both Lontrel XC and applicable glyphosate labels for more information regarding direction for use. See Table 2 for recommended herbicide programs and timing of control.

Table 2. Four possible recommended herbicide programs and timing of control for associated hard-to-control weeds

Application Timing	Rate	Difficult Weeds Controlled
2 leaf – 6 leaf	Lontrel XC @ 40 ac/jug + glyphosate at 0.5 REL/ac. A 2nd application of glyphosate alone @ up to 1.5 REL/ac may be applied if needed	Large weeds or high weed populations. Perennial sow thistle, Canada thistle, wild buckwheat, foxtail barley and dandelion.
2 leaf – early flower	Lontrel XC @ 40 ac/jug + glyphosate at 0.5 REL/ac prior to 6 leaf followed by a 2nd application of glyphosate @ up to 1.0 REL/ac prior to early flower	Large weeds or high weed populations. Perennial sow thistle, Canada thistle, wild buckwheat, foxtail barley and dandelion.
Emergence – 6 leaf	Glyphosate @ up to 2.0 REL/ac single application	Season long control of perennials and winter annuals
Emergence – Early Flower	Sequential applications of glyphosate @ up to 1.0 REL/ac each application	Season long control of perennials and winter annuals

Should I use multiple herbicide tolerant weed management systems?

The short answer is – YES. Using multiple systems will fulfill many of the best practices listed above. Those herbicide tolerant systems include:

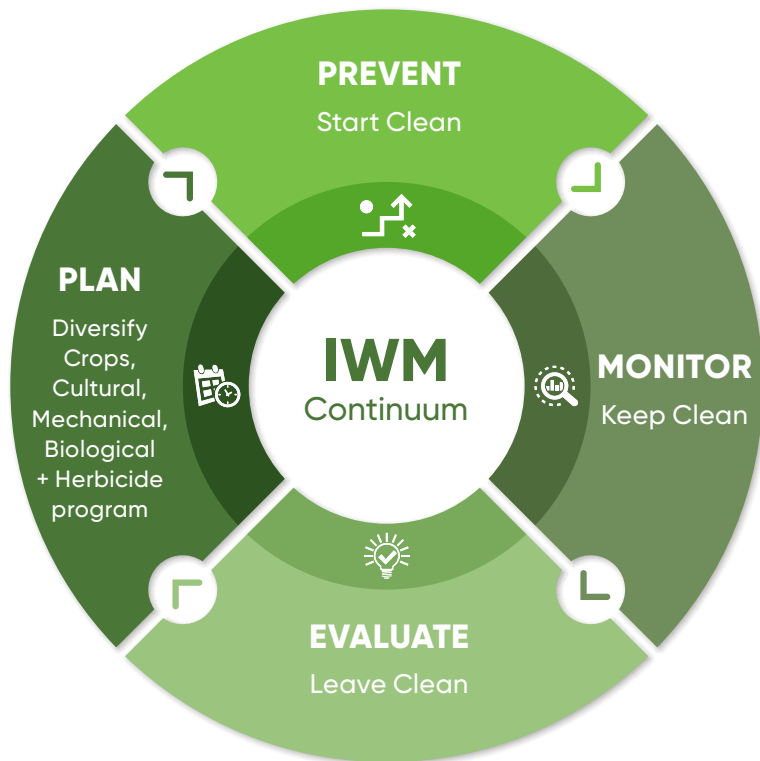
- Clearfield® trait canola (imidazolinone (IMI) tolerant canola) – Through mutagenesis, tolerance to the imidazolinone group of herbicides allows the application of Group 2 herbicides for post emergent control.
- LibertyLink® canola (glufosinate tolerance canola) – Through genetic modification, canola containing glufosinate tolerance can be effective in managing some hard-to-control weeds, especially weeds like kochia that carry resistance to glyphosate.
- Glyphosate-tolerant canola – Through genetic modification, three different technologies including Optimum® GLY, Roundup Ready® canola, and TruFlex™ technology. Their system benefits are compared in above description and graphics.

Weed management decision considerations for each field typically include: historical management tactics (including herbicides and rates) and crops grown, current weed composition and infestation levels, and areas of the field containing hard-to-control weeds (including those weeds tolerant and resistant to certain herbicide groups). There is no “one size fits all” to any weed management program, but our purpose with this technical guide is to demonstrate the value Optimum® GLY herbicide tolerance trait technology can bring to a farmer’s integrated weed management system. The Optimum GLY weed control system provides superior control of hard-to-control weeds over other herbicide tolerant weed control systems such as LibertyLink® traits.

We recommend the advice of your local agronomist or technical advisor to develop an integrated weed management solution that utilizes widely accepted best management practice (BMPs) concepts.

Timing of weed control in canola is extremely important. It is important to maintain clean fields before, during and following the growing season (Figure 8). **The key is to control weeds early (critical weed free period is cotyledon to 4 leaf) before they get too large and start reducing yield.** Yield loss from late herbicide applications vary on a field by field basis depending on herbicide rate, overall health of the field, and growing conditions during and after the application. Losses cannot be predicted, but they could be up to 30 percent, and even more in overlap area from late herbicide applications. (Canola Council 2021)

Figure 8. IWM Continuum



1) START CLEAN

- a. Scout fields before and after use of any management tactic
- b. Keep accurate records of your management tactics used and their results, including any indications of changes in response with hard-to-control weeds
- c. Control weeds early, generally before exceeding 15 cm in height

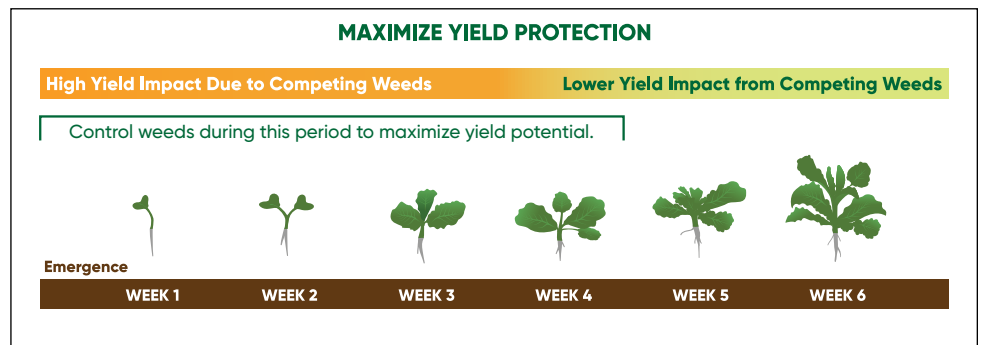
2) KEEP CLEAN

- a. Use correct herbicide(s) for the weed spectrum, with proper rates and timing
- b. Rotate modes of action ensuring herbicides used provide effective control of the target weed species present in your field
- c. Incorporate sound agronomic practices that improve your crop's ability to compete effectively with weeds

3) LEAVE CLEAN

- a. Control weed escapes that can occur before or after harvest
- b. Thoroughly clean equipment to avoid field to field weed spread

Figure 9. Critical weed-free period in canola is between the cotyledon and 4 leaf stage.



Timing of herbicide applications is crucial for controlling weeds effectively and preventing excessive interference with the crop. The critical weed free period for canola is from seedling stage up to 4-leaf stage, or 17-38 days after crop emergence. (Martin et al., 2001)

Weed resistance is a serious problem that needs consideration when planning our integrated weed management program. Herbicide resistance is the ability of a weed biotype to survive a herbicide application, where under normal circumstances that herbicide applied at the recommended rate would control the weed (HRAC). Understanding risk for herbicide resistance is important. Table 3 on the next page will help assess the risk of resistance developing in each field.



Table 3. Assessment of the Risk of Resistance Development per Target Species (The major risk factors within a cropping system) (HRAC 2021)

Management Option	Risk of Resistance		
	Low	Moderate	High
Herbicide mix or Mode of Action (MOA) rotation in cropping system	≥3 MOAs	2 MOAs	1 MOA
Integrated Weed Control	Cultural, Mechanical, & Chemical	Cultural & Chemical	Chemical only
Use of same MOA per season	Once	More than once	Many times
Cropping system	Full rotation	Limited rotation	No rotation
Resistance status to MOA	Unknown	Limited	Common
Weed infestation	Low	Moderate	High
Control in last 3 years	Good	Declining	Poor

Best management practices (BMPs) specific to delaying resistance corroborate with our integrated weed management discussion earlier in this document. Key tactics to delay the onset of resistance include three main areas: 1) rotating crops, 2) using multiple tactics including cultural management and, 3) herbicide mode of action rotation and use of mixtures.

In addition to the BMPs described above consider the following with regard to managing or delaying the onset of resistant weeds:

- 1) Use label rates and timings (helps in identifying potential weed resistance)
- 2) Continually monitor and test surviving weeds for resistance
- 3) Manage any surviving weeds remaining after application
- 4) Follow industry weed management resource guides

One example of a resistant weed problematic in certain Canadian regions is glyphosate-resistant kochia. For this particular weed, we recommend a pre-seed application of Prospect™ herbicide prior to canola planting. It is the best option for kochia and to help manage other challenging broadleaf weeds.

If the risk of developing glyphosate resistance in a specific field is high, consider herbicide resistance testing to confirm the status within the field and consider tactics in Table 6 to reduce the weed seedbank of resistant weed population(s) to the lowest level prior to growing Optimum® GLY herbicide tolerance trait. It may be that after considering the weed spectrum in the field, that an alternative crop should be considered. The purpose of using the best practices described in this document is to sustain the use of glyphosate herbicide and the Optimum GLY by minimizing the risks associated with the evolution of glyphosate-resistant weeds in canola rotations and Canadian farming systems.

Table 4 below describes specific management tactics to consider as part of an integrated weed management system.

Table 4. Integrating BMPs for resistance management on your fields

BMP Timing	Herbicide	Cultural & Mechanical	Complementary
Start Clean (Pre-planting)	Utilize non-glyphosate pre-seed or pre-emergent weed control options with different MOAs		Farm hygiene (seed)
	Chem-Fallow weed control with appropriate tank-mixes	Pre-seed cultivation with minimal or full disturbance depending on weed type and populations	Avoid feeding hay on cropping area
	Use other MOAs with glyphosate when spraying Optimum GLY for good stewardship	Crop Rotation – control tough weeds in your previous crops outside of Optimum GLY	Avoid spreading weed seeds with livestock
Keep Clean (In Crop)	Ensure effective weed control	Prevent viable weed seeds from developing	
	Control weeds early to help maximize yield potential and enhance control	Mowing	Tramline/precision cropping system
	Post emergent herbicide (sequences/tank mixes)	Crop competition e.g. row spacing/ seeding rate/row orientation/crop and variety selection in rotations	Crop nutrition
	Use different herbicide modes of action to control weed escapes	Grazing and grain, green manure/brown manure, cutting crop for hay/silage	Prevent weed seed set (fence line and roadside) Hand roguing
Keep Clean (Harvest)	Pre-harvest application with herbicide	Swathing/windrowing	Farm hygiene (grain) Cleaning equipment before transport
		Harvest weed seed capture	
		Chaff carts	
		Bale direct	
Keep Clean (Post-Harvest)	Chem-fallow applications use different herbicide modes of action to control specific weed escapes	Tillage to control weeds in fallow	Plan a cropping system that drives down the weed seed bank -control tough to kill weeds in your cereal crops before canola
	Alternate pre-emergent herbicide in other rotation crops	Strategic Grazing	



Best Management Practices for Controlling Volunteer Canola

The key to preventing volunteer canola from becoming a problem is to plan and use the right tools. Volunteer canola is one of many weeds likely to be present in summer fallow or subsequent cropping systems following a canola crop. Volunteer canola plants may be present due to a number of circumstances:

- Seed lost/split at harvest.
- Incorrect herbicide application for fallow clean up (particularly when the volunteer canola plant has a herbicide tolerance trait).
- Seed movement around farm (e.g. spillage)
- Adventitious presence in seed

Control strategies need to consider the entire weed spectrum, resistance management objectives, tank mixtures and timing of application.

Tips for controlling volunteer canola:

- Plan ahead
- Be aware that most seeds germinate within two years, but could appear 4-7 years after your canola crop.
- Avoid deep cultivation as it can extend seed dormancy
- Target plants for control while they are small – (< 4-leaf stage)
- Monitor volunteers and control before flowering to prevent seed set
- Use complementary tools, like non-chemical control methods
- Know the field history and maintain good records as this will affect the herbicide selection. There are many herbicides that control volunteer canola in all stages of the crop rotation.
- Consider the following herbicides for spring or fall assistance in controlling volunteer canola: Korrex™ II, Paradigm™ PRE, PrePass™ Flex, PrePass™ XC, and Prospect™.¹
- It is crucial to maintain records of ALL herbicide tolerant traits within any GM canola crop as this will affect herbicide choices to ensure effective control of volunteers
- Use all herbicides at full label rate for improved control.
- Observe minimum re-cropping intervals. Utilize non-chemical methods as part of Integrated Weed Management Plan

¹ Please refer to product labels, the Corteva Agriscience Product Use Guide or Corteva Agriscience Western Field Guide.



References Cited

- Tzin V., a. G. G. 2010. The Biosynthetic Pathways for Shikimate and Aromatic Amino Acids in *Arabidopsis thaliana*, The Arabidopsis Book vol. 8. The American Society of Plant Biologists.
- Rey, M. W., P. Ramaiya, B. A. Nelson, S. D. Brody-Karpin, E. J. Zaretsky, M. Tang, A. L. de Leon, H. Xiang, V. Gusti, I. G. Clausen, P. B. Olsen, M. D. Rasmussen, J. T. Andersen, P. L. Jorgensen, T. S. Larsen, A. Sorokin, A. Bolotin, A. Lapidus, N. Galleron, S. D. Ehrlich, and R. M. Berka. 2004. Complete genome sequence of the industrial bacterium *Bacillus licheniformis* and comparisons with closely related Bacillus species. Genome Biol.
- Siehl, D. L., L. A. Castle, R. Gorton, and R. J. Keenan. 2007. The molecular basis of glyphosate resistance by an optimized microbial acetyltransferase. J Biol Chem 282: 11446-11455.
- Rao, V. S. 2015. Transgenic Herbicide Resistance in Plants, CRC Press, Boca Raton, FL 33487.
- Weber, N. 2011. Petition for the Determination of Nonregulated Status for Herbicide-Tolerant 73496 Canola. Submitted to Animal and Plant Health Inspection Service by Pioneer Hi-Bred International, Inc., Johnston, IA.
- <http://hracglobal.com/usa/files/Management-of-Herbicide-Resistance.pdf>
- <https://www.canolacouncil.org/canola-encyclopedia/weeds/weed-management/>
- [https://www.umanitoba.ca/outreach/naturalagriculture/weed/files/herbicide/critical_period_e.htm#:~:text=The%20critical%20period%20of%20weed%20control%20for%20canola%20is%20around,et%20al.%2C%202001\).](https://www.umanitoba.ca/outreach/naturalagriculture/weed/files/herbicide/critical_period_e.htm#:~:text=The%20critical%20period%20of%20weed%20control%20for%20canola%20is%20around,et%20al.%2C%202001).)

DOWNLOAD THE CORTEVA AGRISCIENCE FIELD GUIDE APP

The Corteva Agriscience Field Guide app showcases our expanded portfolio of Canadian crop protection products and is designed to help you get the most out of every acre. It's a quick access, easy and user-friendly tool that assists in choosing the right high performing products as well as the right order to tank-mix them.

Download our new Field Guide App. Scan the code with your mobile device camera to find out more and easily download:



Disclaimer

The Optimum[®] GLY Herbicide Tolerance Trait Technical Bulletin is provided for reference purposes only and is not a substitute for or an addition to the product label or MSDS. Always read and follow label directions. The information and any recommendations in this bulletin ("Information") are presented in good faith; however, Corteva Agriscience makes no warranty as to the completeness or accuracy of the Information. The Information is supplied upon the condition that persons receiving it will make their own determinations as to its suitability for their purposes prior to use and consult with their advisors to ensure compliance with all federal, state, and local regulations. In no event will Corteva Agriscience be responsible for damages of any nature whatsoever resulting from the use of or reliance on this Information.

NO REPRESENTATION OR WARRANTIES, EITHER EXPRESSED OR IMPLIED, OF MERCHANTABILITY, FITNESS FOR A PARTICULAR PURPOSE OR OF ANY OTHER NATURE ARE MADE HEREUNDER WITH RESPECT TO THE INFORMATION OR THE PRODUCTS TO WHICH THE INFORMATION REFERS.

[®], [™] Trademarks of Corteva Agriscience and its affiliated companies. © 2023 Corteva. Liberty[®], LibertyLink[®] and the Water Droplet Design are registered trademarks of BASF. The unique Clearfield symbol and Clearfield are registered trademarks of BASF. Roundup Ready[®] canola and TruFlex[™] technology are registered trademarks of Bayer Group.

Hybrids and varieties with the Roundup Ready[®] gene (RR) are tolerant to labeled rates of Roundup[®] branded herbicides. This technology allows for post-emergent applications of Roundup without crop injury or stress (see herbicide label). Labeled Roundup herbicide should only be used over the top of those hybrids that carry the Roundup Ready designation.